



BETON ÇELİK ÇUBUKLARI / HOT ROLLED ROUND STEEL

(Düz yuvarlak, Plain Round)

BOYUT STANDARDI / DIMENSION STANDARD

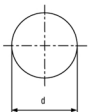
TS EN 10060

TS 708

KALİTE STANDARDI / QUALITY STANDARD

TS EN 10025

TS 708



Çap/Diameter (d) mm	Tolerans Tolerance mm	Anma kütlesi Nominal weight (Kg/m)	Kesit alanı Section area cm ²
10		0,617	0,785
12		0,888	1,13
13	± 0,4	1,040	1,33
14		1,210	1,54
15		1,380	1,77
16		1,580	2,01
18		2,000	2,34
19		2,230	2,84
20	± 0,5	2,470	3,14
22		2,980	3,80
24		3,550	4,52
25		3,850	4,91
26		4,170	5,31
27		4,490	5,73
28		4,830	6,16
30	± 0,6	5,550	7,07
32		6,310	8,04
35		7,550	9,62
36		7,990	10,2
38		8,900	11,3
40	± 0,8	9,860	12,6
42		10,990	13,9